

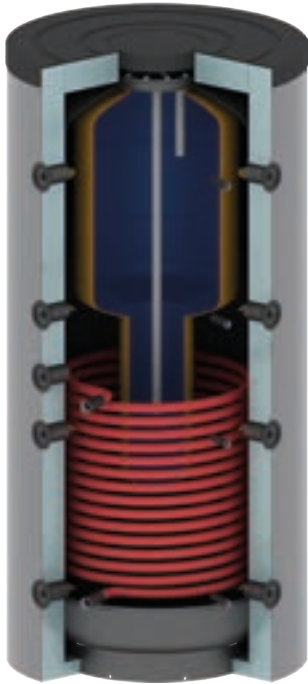
SIGMA

Combined tank type "Tank in Tank"



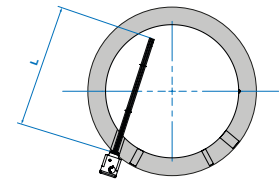
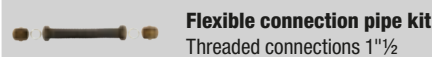
100 150 200 **300** 400 500 600 750 800 1000 1250 1500 2000 2500 3000 4000 5000

Combined tanks for DHW production and accumulation of heating water.



Main features		
Material	Carbon steel	
External treatment	600-2000	Rustproof paint
Internal treatment	Raw	
Maximum working pressure	Tank	3 bar
Maximum working temperature	Tank	95 °C
Maximum working pressure	Exchanger	10 bar
Maximum working temperature	Exchanger	110 °C
DHW tank		
	Enamelled carbon steel DIN 4753	
Maximum working pressure	DHW Tank	6 bar
Maximum working temperature	DHW Tank	95 °C
Cathodic protection	DHW Tank	Magnesium anode
Guarantee	Tank	5 years

Accessories

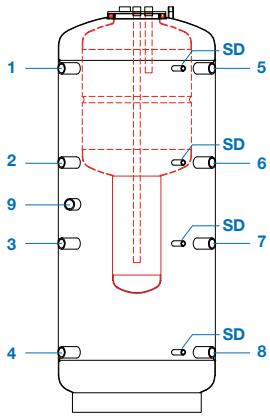


Max. length heating element

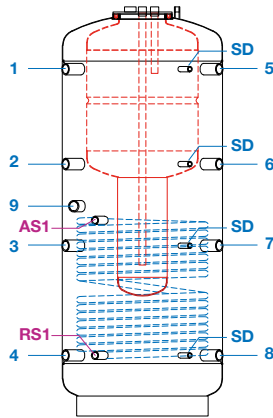
Model	L (mm)
300	560
400	560
600	620
800	720
1000	720
1250	850
1500	900
2000	950

Model	Version	Insulation	Efficiency class	Dispersion	Lower Exchanger R1 / R2	Upper Exchanger R2	Capacity DHW tank	Weight			
								UE 812/2013	(W)	(m²)	(m²)
SIGMA	300	M / R1	PU 50mm + PVC	B	68	1.0	-	80	88	104	-
SIGMA	400	M / R1	PU 50mm + PVC	C	86	1.2	-	115	102	131	-
SIGMA	600	M / R1 / R2	Polyester 100mm + PVC	C	113	1.8	1.2	175	135	158	185
SIGMA	800	M / R1 / R2	Polyester 100mm + PVC	C	117	2.4	1.8	175	147	178	204
SIGMA	1000	M / R1 / R2	Polyester 100mm + PVC	C	144	3.0	2.4	205	171	209	240
SIGMA	1250	M / R1 / R2	Polyester 100mm + PVC	C	157	3.0	2.4	205	197	240	275
SIGMA	1500	M / R1 / R2	Polyester 100mm + PVC	C	170	3.6	2.4	205	215	261	292
SIGMA	2000	M / R1 / R2	Polyester 100mm + PVC	D	204	4.2	3.0	205	281	332	377

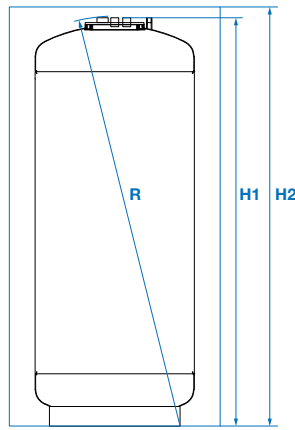
SIGMA - M



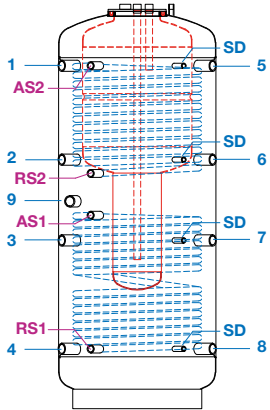
SIGMA - R1



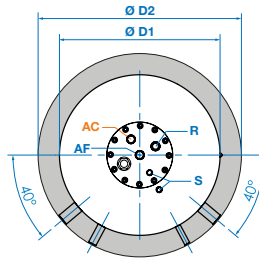
Dimension



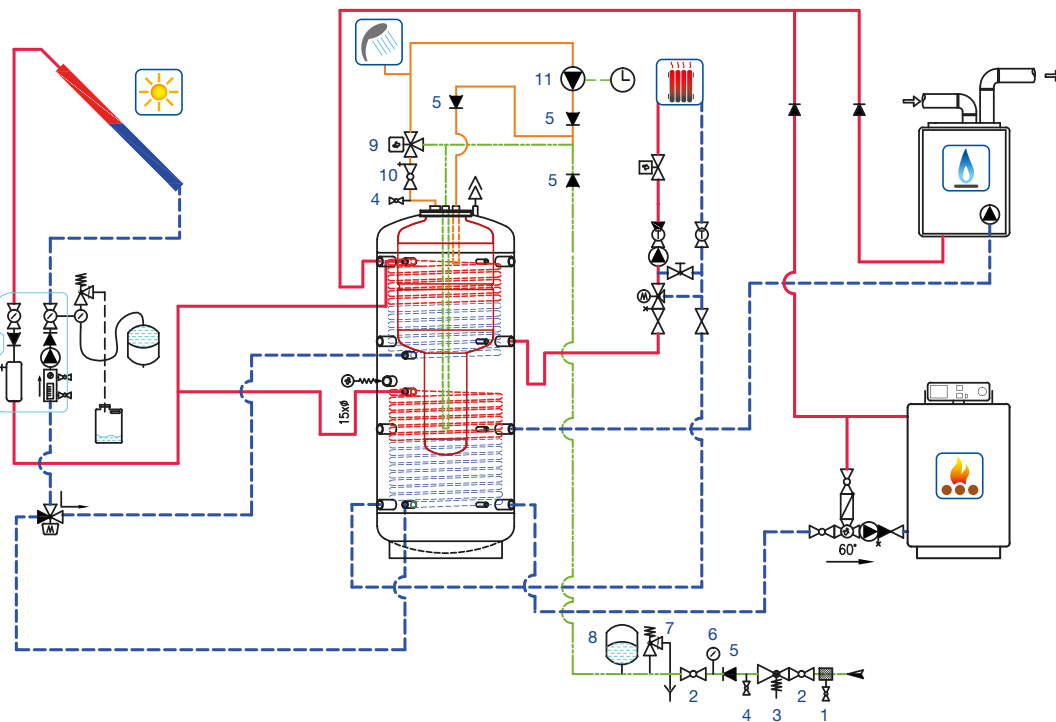
SIGMA - R2



Dimension



Legend		
1	Gas, fuel or pellet boiler flow	1" ½
2	Free	1" ½
3	Free	1" ½
4	Heating return	1" ½
5	Heating flow high temperature	1" ½
6	Heating flow low temperature	1" ½
7	Gas, fuel or pellet boiler return	1" ½
8	Wood boiler return	1" ½
9	Heating element	1" ½
R	Pumper DHW return	1"
S	Vent or safety valve	½"
SD	Sensor	½"
RS1	Solar return	1"
RS2	Solar return	1"
AS1	Flow return	1"
AS2	Cold water inlet	1"
AC	Hot water outlet	1"
Ø D1 Diameter without insulation		
Ø D2 Diameter with insulation		
R Topple height		
H1 Height without insulation		
H2 Height with insulation		



Model	1-5	2-6	3-7	4-8	9	RS1	AS1	RS2	AS2	Ø D1	Ø D2	R	H1	H2
300	1110	835	460	210	610	210	540	-	-	550	650	1505	1325	1357
400	1610	1100	660	210	880	210	660	-	-	550	650	1960	1825	1850
600	1394	994	594	224	804	224	724	994	1344	700	900	1715	1630	1700
800	1426	1026	626	256	866	256	801	1026	1386	790	990	1765	1673	1760
1000	1720	1249	844	300	1040	300	970	1180	1720	790	990	2115	2028	2090
1250	1700	1239	784	300	1085	300	970	1160	1700	950	1150	2115	2006	2060
1500	1750	1285	900	350	1128	350	1000	1240	1750	1000	1200	2235	2139	2200
2000	2025	1489	959	325	1214	325	1105	1475	2025	1100	1300	2480	2368	2420